



NOVELTIES

Perfect for catering, concessions and corporate, our luscious ice cream novelties are so creamy, smooth and delicious, your customers won't believe they're non-dairy and made from 100% plants. Our chefs harnessed the benefits of the lupin bean for first-to-market, game-changing handheld treats with rich mouthfeel and zero aftertaste.

All Wicked Kitchen products are available for local distribution through DOT Foods. See individual products for more details.

VEGAN

DAIRY-FREE

NON-GMO

817 5th Avenue South
Suite 400
Minneapolis, MN 55404

FoodServiceSales@wickedkitchen.com
wickedkitchen.com

     @wickedkitchen



CHOCOLATE & ALMOND STICKS

Sweet vanilla ice cream in indulgent chocolate flavored coating with toasted almond pieces.

INGREDIENTS: Water, Chocolate and Coconut Oil Coating (chocolate liquor, sugar, cocoa butter, coconut oil, sunflower lecithin, polyglycerol polyricinoleate acid), Coconut Oil, Glucose Syrup, Sugar, Toasted Almond, Lupin Protein Isolate, Maltodextrin, Dextrose, Calcium Carbonate, Mono- and Diglycerides, Carob Bean Gum, Guar Gum, Salt, Natural Flavors, Vanilla Powder, Beta-Carotene (color). CONTAINS: COCONUT, ALMONDS.

SHELF LIFE: 12 months

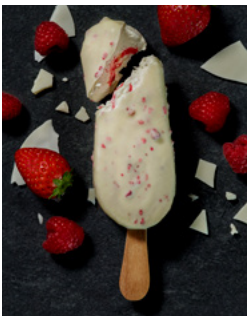
DOT ITEM # 763501
SYSCO ITEM # 7233858
UPC 10850035608590

PRODUCT SPECIFICATIONS

UNIT	CASE	CASE
Per case	20	Height 7.83"
Weight	3.38	Length 11.77"
UOM	fl oz	Width 5.94"
		Gross Weight 3.77lb
		Net Weight 3.086lb

Nutrition Facts	
Serving size	1 Stick (70g)
Amount Per Serving	
Calories	260
% Daily Value*	
Total Fat 18g	23%
Saturated Fat 12g	60%
Trans Fat 0g	
Cholesterol 0mg	0%
Sodium 35mg	2%
Total Carbohydrate 23g	8%
Dietary Fiber 4g	14%
Total Sugars 16g	
Includes 15g Added Sugars	30%
Protein 4g	8%
Vitamin D 6.8mcg	35%
Calcium 40mg	6%
Iron 6.5mg	35%
Potassium 180mg	4%

*The % Daily Value (DV) tells you how much a nutrient in a serving of food contributes to a daily diet. 2,000 calories a day is used for general nutrition advice.



BERRY WHITE STICKS

Sweet vanilla ice cream with berry sauce swirl in indulgent white chocolate flavor coating with red berry pieces.

INGREDIENTS: White Chocolate Flavor Coating with Raspberries (Sugar, Cocoa Butter, Modified Rice Starch, Coconut Oil, Freeze Dried Raspberry Pieces, Sunflower Lecithin, Natural Flavor), Water, Red Berry Sauce (Sugar, Water, Strawberry Purée, Raspberry Purée, Modified Cornstarch, Citric Acid, Pectin, Xanthan Gum, Anthocyanins [color], Natural Flavor), Coconut Oil, Glucose Syrup, Sugar, Lupin Protein Isolate, Maltodextrin, Dextrose, Calcium Carbonate, Mono- and Diglycerides, Carob Bean Gum, Guar Gum, Salt, Natural Flavors, Vanilla Powder, Beta-Carotene (color). CONTAINS: COCONUT.

SHELF LIFE: 12 months

DOT ITEM # 763503
SYSCO ITEM # 7233876
UPC 10850035608583

PRODUCT SPECIFICATIONS

UNIT	CASE	CASE
Per case	20	Height 7.83"
Weight	3.38	Length 11.77"
UOM	fl oz	Width 5.94"
		Gross Weight 3.99lb
		Net Weight 3.351lb

Nutrition Facts	
Serving size	1 Stick (76g)
Amount Per Serving	
Calories	250
% Daily Value*	
Total Fat 15g	19%
Saturated Fat 11g	55%
Trans Fat 0g	
Cholesterol 0mg	0%
Sodium 45mg	2%
Total Carbohydrate 28g	10%
Dietary Fiber 1g	4%
Total Sugars 21g	
Includes 20g Added Sugars	40%
Protein < 1g	1%
Vitamin D 0mcg	0%
Calcium 60mg	4%
Iron 0.3mg	2%
Potassium 20mg	0%

*The % Daily Value (DV) tells you how much a nutrient in a serving of food contributes to a daily diet. 2,000 calories a day is used for general nutrition advice.



CHOCOLATE & RED BERRY CONES

Sweet vanilla ice cream with red berry sauce and chocolate chips in a gluten free maize cone.

INGREDIENTS: Water, Cone (corn flour, sugar, cornstarch, soy lecithin, coconut oil, salt), Chocolate Flavored Coating with Coconut Oil (coconut oil, sugar, Cocoa Powder (processed with alkali), sunflower lecithin, natural flavor), Coconut Oil, Sugar, Lupin Protein Isolate, Red Berry Sauce (sugar, water, strawberry purée, raspberry purée, modified cornstarch, citric acid, pectin, xanthan gum, anthocyanins (color), natural flavor), Glucose Syrup, Chocolate Chips (sugar, chocolate liquor, cocoa butter, sunflower lecithin, natural flavor), Cocoa Powder (processed with alkali), Inulin, Maltodextrin, Dextrose, Mono- and Diglycerides, Calcium Carbonate, Salt, Carob Bean Gum, Guar Gum, Natural Flavor. CONTAINS: COCONUT, SOY.

SHELF LIFE: 12 months

DOT ITEM # 763500
SYSCO ITEM # 7233847
UPC 10850035608576

PRODUCT SPECIFICATIONS

UNIT	CASE	CASE
Per case	20	Height 4.61"
Weight	4.05	Length 11.58"
UOM	fl oz	Width 7.64"
		Gross Weight 3.55lb
		Net Weight 2.954lb

Nutrition Facts	
Serving size	1 cone (67g)
Amount Per Serving	
Calories	200
% Daily Value*	
Total Fat 10g	13%
Saturated Fat 9g	45%
Trans Fat 0g	
Cholesterol 0mg	0%
Sodium 50mg	2%
Total Carbohydrate 27g	10%
Dietary Fiber 2g	7%
Total Sugars 15g	
Includes 14g Added Sugars	28%
Protein 2g	4%
Vitamin D 0mcg	0%
Calcium 70mg	5%
Iron 1.3mg	8%
Potassium 120mg	2%

*The % Daily Value (DV) tells you how much a nutrient in a serving of food contributes to a daily diet. 2,000 calories a day is used for general nutrition advice.